

## **Submission to Kaipara District Council on Class 4 Gambling Venue Policy Review - 2018**

**Warren Moetara, Service Manager  
Anil Shetty, Public Health Strategist**

***Public and Population Health Unit  
Northland District Health Board  
28 November 2018***



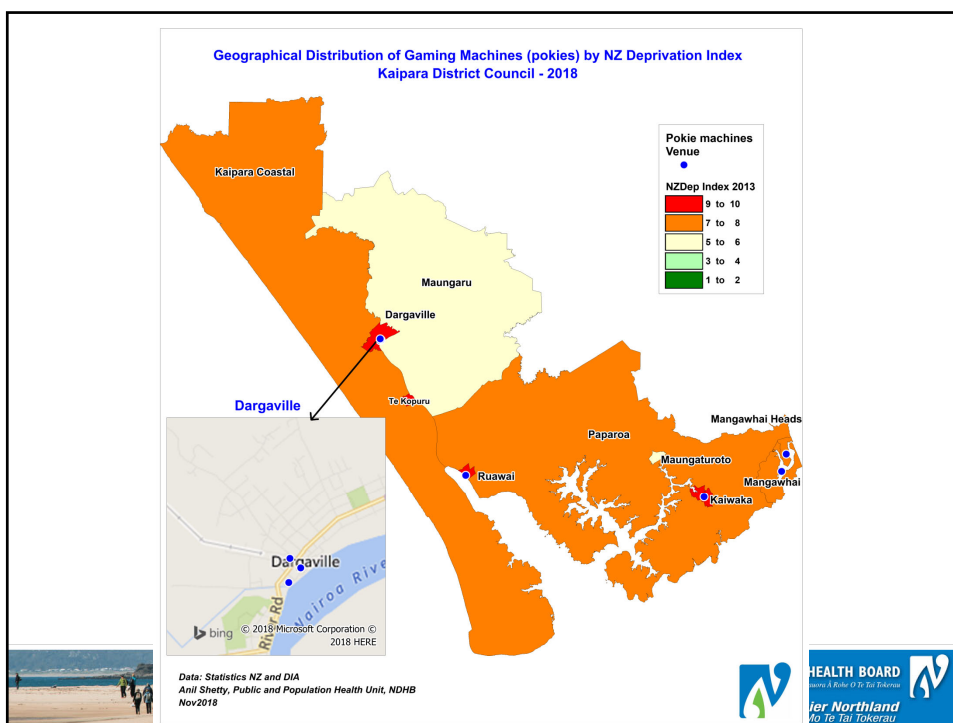
### **Gambling and Public Health**

- Although seen as a leisure activity, gambling can adversely impact on physical, mental and social-wellbeing of a person
- Gaming machines (pokies) are considered to be the most harmful form of gambling
- Pokies are easy to operate
- Problem gambling results in significant costs to vulnerable individuals, families/whanau and society



## Pokie machines in Kaipara

- Currently 7 venues with 60 pokie machines
- ~ 1 pokie machine for every 276 adults
- All of them are located in areas of high deprivation (NZDep 2013 Index 7 – 10)
- Are easily accessible



## Socio-economic profile - Kaipara

- Higher proportion of Maori population than National (24% vs 16%) (Statistics NZ Projections)
- Lower personal median income ~ \$22,600 v/s National \$28,500 (2013 Census)
- 45 percent earned  $\leq$  \$20,000 per year (2013 Census)
- Maori had much lower personal median income ~ \$19,400 than total population of Kaipara (2013 Census)



## Socio-economic profile - Kaipara

- 22% of KDC population are above 65 years of age (last decade 16% to 22%).
- Kaipara's rate of growth is faster than New Zealand (last decade 13% to 15%).
- Older people (> 65 years) are more likely to be on fixed incomes.
- Less likely to seek help with gambling problem.\*

\*Pamela Hirsch. (2000). Seniors and gambling: exploring the issues: Summary Report. Alberta Alcohol & Drug Abuse Commission. Alberta.



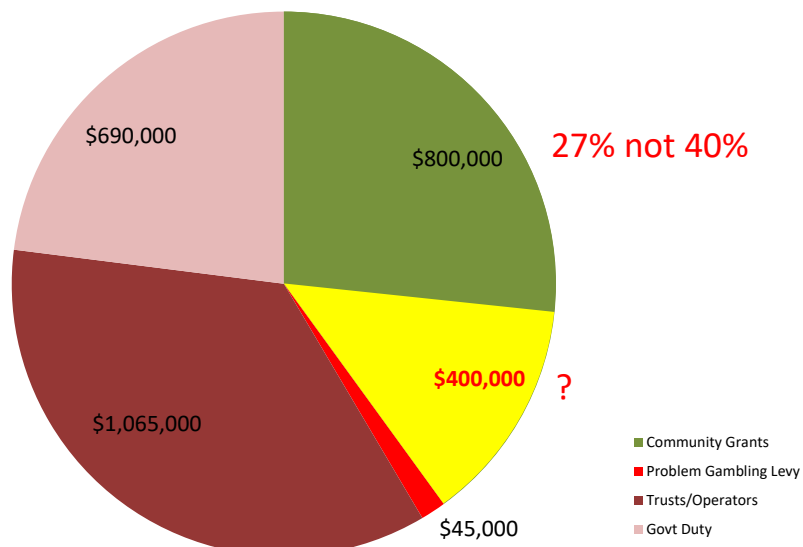
## Pokie machines and spending – Kaipara\*

- Pokie venues and numbers are reducing
- However, the spending has increased in the last few years – indicating increase in harm
- Average spend per head and per machine have also increased

\*KDC 2018



## Pokie machine spending - 2017



## Who spends more time and money on pokies\*

- Māori and Pacific Islanders had higher average monthly gambling expenditure
- Adults with no qualifications and unemployed adults were more likely to be regular gamblers on pokies
- Unemployed adults had the highest average expenditure on gambling-related activities
- Moderate risk/problem gamblers spend more significantly higher amounts

*(New Zealand 2012 National Gambling Study: Overview and gambling participation - report number 1 - Gambling and Addictions Research Centre AUT)*



## Conclusion

- Kaipara's demographics and socioeconomic conditions are susceptible to gambling related harm.
- Vulnerable Kaipara community members spend higher amounts on pokies.
- Money spent on pokies is not voluntary donation – comes from low-income families and communities
- “High risk” policy essential to protect vulnerable communities of Kaipara



## Recommendations

- KDC should be proud of its current 'sinking lid' policy and should retain it - **preferred option**
- All applications for relocation of pokie venues/machines should be publicly notified and determined at a Council hearing.



## Thank you

